

Comprehensive Plan Amendment 2023-002

**An Ordinance of the City of Plano, Texas, amending the Future Land Use Map, Parks Master Plan Map, and Bicycle Transportation Plan Map of the Comprehensive Plan, originally adopted by Ordinance No. 2021-11-1, incorporating amendments related to the 2023 update of the Parks, Recreation, Trails, & Open Space Master Plan; and providing an effective date.**

**WHEREAS**, the Comprehensive Plan was adopted on November 11, 2021, (Ordinance No. 2021-11-1); and most recently amended on October 10, 2022 (Ordinance No. 2022-10-7); and

**WHEREAS**, the Parks, Recreation, Trails, & Open Space Master Plan was approved on October 8, 2018; and

**WHEREAS**, the Comprehensive Plan and Parks, Recreation, Trails & Open Space Master Plan recommend regular review and updating, as needed, to maintain alignment with other City of Plano policies and to account for changing conditions in the community; and

**WHEREAS**, the City Council desires to repeal the current Parks, Recreation, Trails, and Open Space Master Plan and replace it with a new Parks, Recreation, Trails and Open Space Master Plan (the “Parks Master Plan”), to update policies and implementation actions needed to maintain high-quality park, recreation, and trail systems and services for Plano citizens and businesses, while satisfying the Parks and Recreation Department’s accreditation requirements and improving the City of Plano’s competitiveness for external funding opportunities for parks, recreation, and trail system improvements; and

**WHEREAS**, the Parks Master Plan was developed over the course of a one-year period during which the Parks and Recreation Department conducted direct outreach to the general public, the Parks and Recreation Planning Board, sports associations, and a broad range of community groups and public agencies; and

**WHEREAS**, the Parks Master Plan includes the Parks Master Plan Map and the Bicycle Transportation Plan Map, each of which is also an adopted component of the Comprehensive Plan; and

**WHEREAS**, the Parks Master Plan also influences the Future Land Use Map of the Comprehensive Plan, as each of these maps includes designations that are applied to areas of the community that currently support, or are expected to support, park, recreation, and trail facilities. These maps also identify major private open spaces and other amenities that contribute to the social fabric of the City of Plano; and

**WHEREAS**, on April 3, 2023, the Planning & Zoning Commission called for a public hearing to initiate a Comprehensive Plan amendment to update the Parks Master Plan, Bicycle Transportation Plan Map, Future Land Use Map, and other related sections of the Comprehensive Plan associated with the update to the Park Master Plan; and

**WHEREAS**, the Planning & Zoning Commission held a public hearing on June 19, 2023, open to all persons wishing to comment on the proposed Comprehensive Plan amendments, and subsequently recommended approval of said amendments; and

**WHEREAS**, the City Council held a public hearing, open to persons wishing to comment on the proposed Comprehensive Plan amendments, and, following such hearing, voted in favor of the amendments on July 24, 2023; and

**WHEREAS**, the City Council, having been presented the proposed amendments to the Comprehensive Plan to incorporate the amendments upon full review and consideration thereof, and all matters attendant and related thereto, is of the opinion that the amendments should be approved and adopted by the City of Plano.

**NOW, THEREFORE, BE IT ORDAINED BY THE CITY COUNCIL OF THE CITY OF PLANO, TEXAS, THAT:**

**Section I.** The findings set forth above are incorporated into the body of this Ordinance as if fully set forth herein.

**Section II.** The Future Land Use Map, Parks Master Plan Map, and Bicycle Transportation Plan Map of the Comprehensive Plan, are hereby amended as depicted in attached Exhibits A, B, and C, respectively.

**Section III.** The primary format of the Comprehensive Plan is a publicly accessible website ([www.PlanoCompPlan.org](http://www.PlanoCompPlan.org)) that allows amendments to be efficiently incorporated.

**Section IV.** The City of Plano has the ability to prepare other plans, policies, or strategies as required in accordance with Section 213.004, Local Government Code.

**Section V.** The City Manager is authorized to implement continual maintenance and periodic technical updates of the Comprehensive Plan to adjust such items as facts, figures, inventories, and descriptions or graphic depictions of existing conditions, excluding the strategic framework of the Plan.

**Section VI.** This ordinance shall become effective immediately from and after its passage.

**PASSED AND APPROVED on the 24th day of July, 2023.**

---

John B. Muns, MAYOR

ATTEST:

---

Lisa C. Henderson, CITY SECRETARY

APPROVED AS TO FORM:

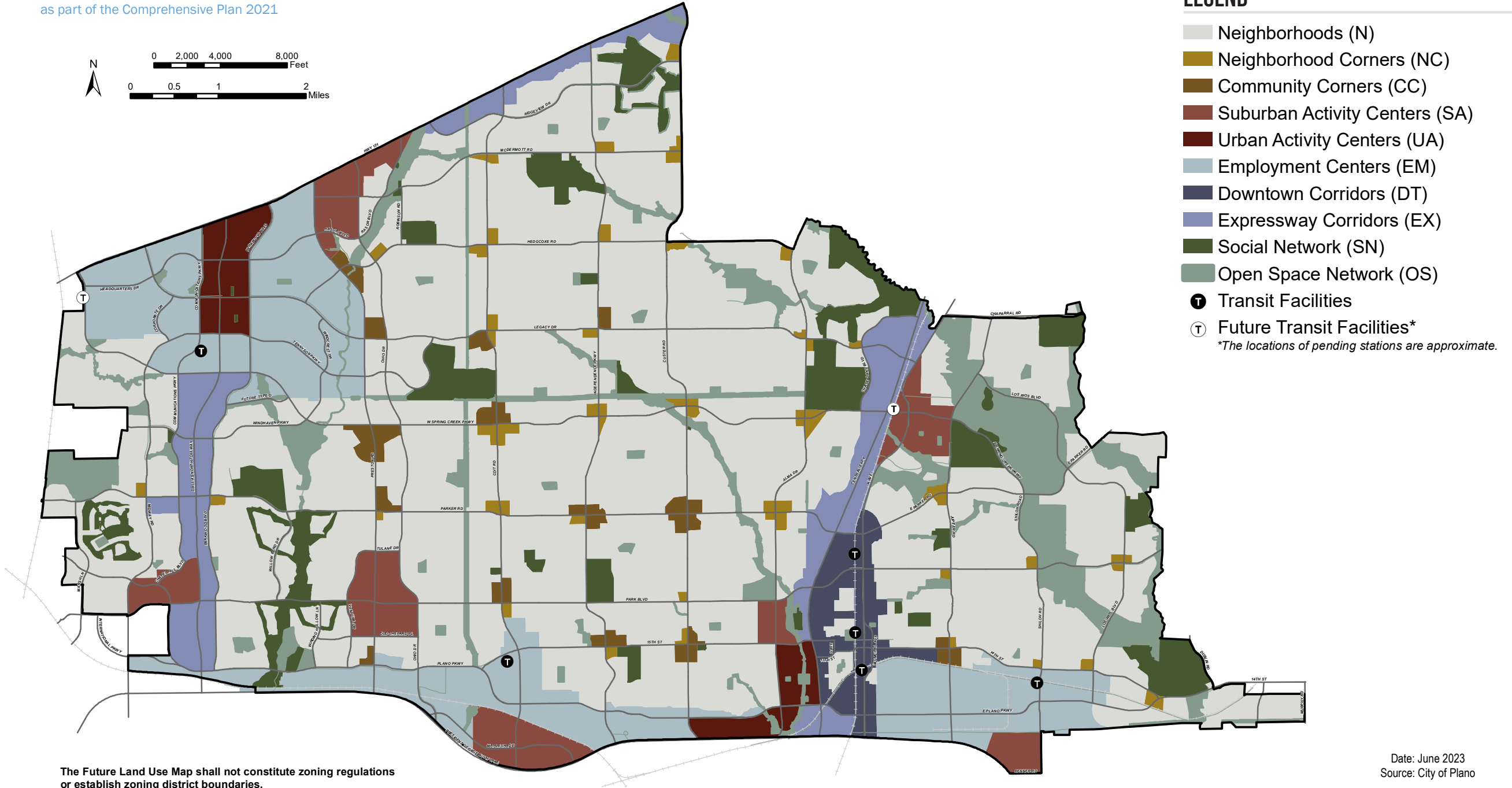
---

Paige Mims, CITY ATTORNEY



## FUTURE LAND USE MAP

Future Land Use Map and Dashboards adopted by City Council on July 24, 2023  
as part of the Comprehensive Plan 2021



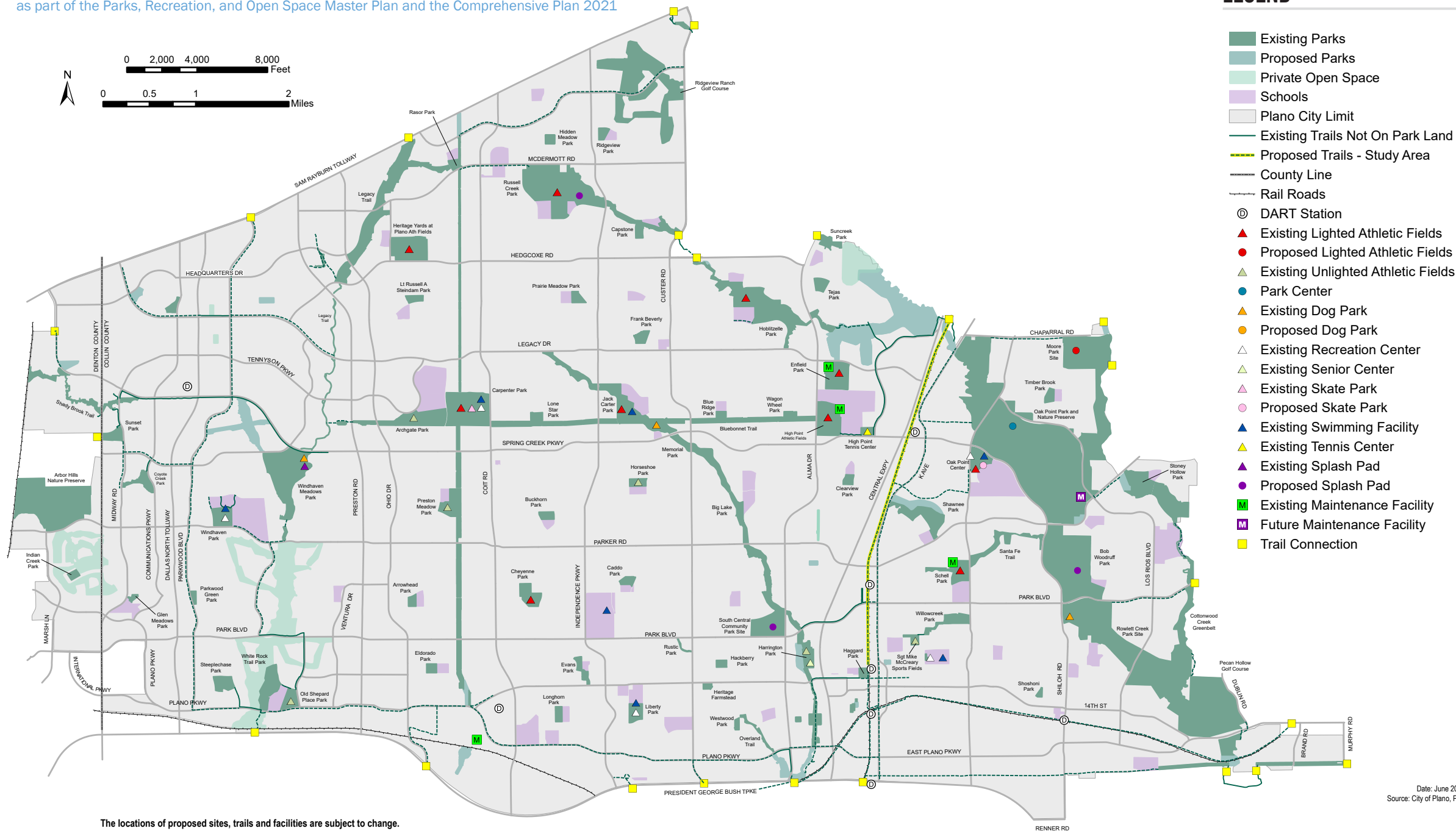
The Future Land Use Map shall not constitute zoning regulations  
or establish zoning district boundaries.

Date: June 2023  
Source: City of Plano



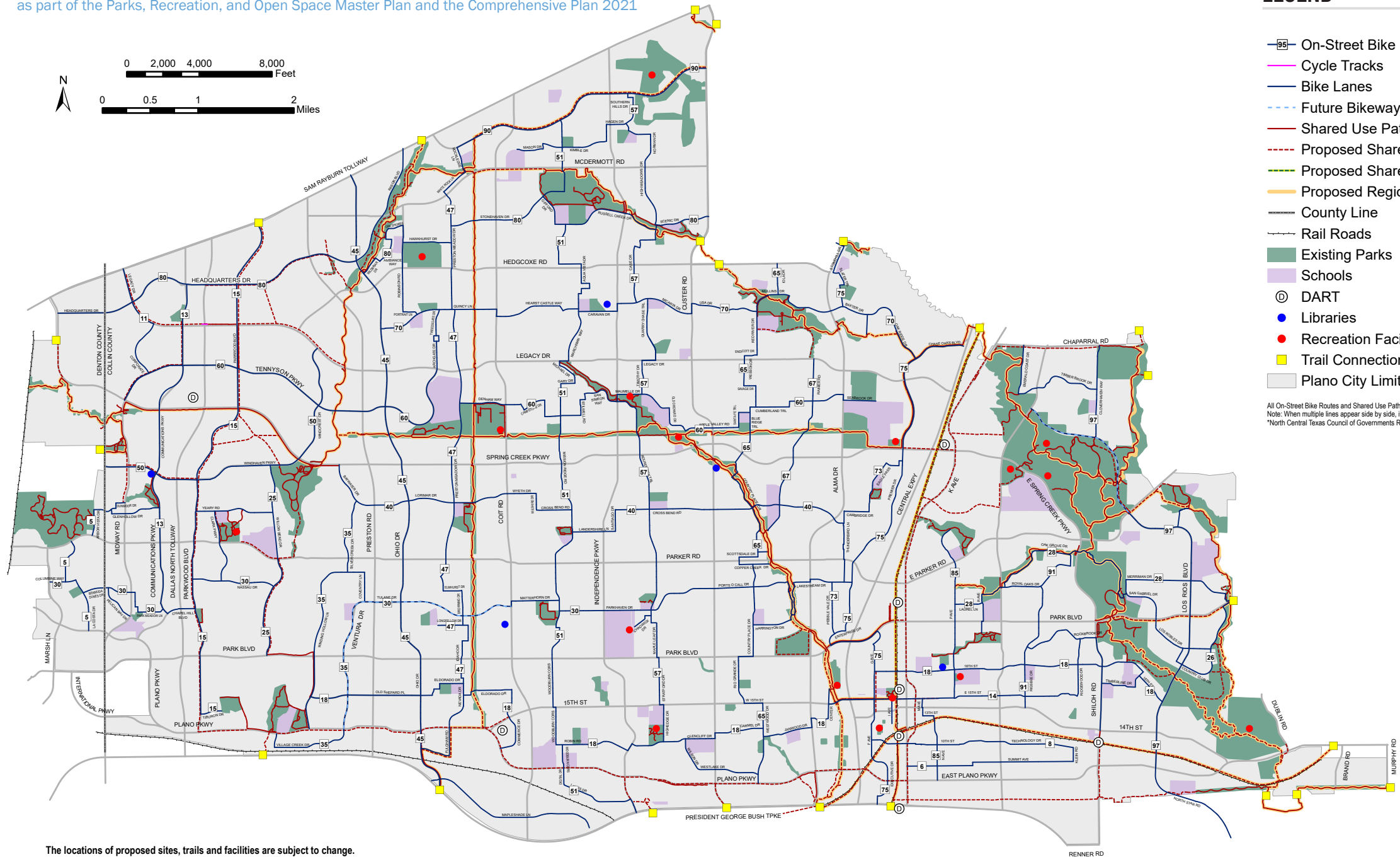
## PARKS MASTER PLAN MAP

Parks Master Plan Map adopted by City Council on July 24, 2023  
as part of the Parks, Recreation, and Open Space Master Plan and the Comprehensive Plan 2021



# BICYCLE TRANSPORTATION PLAN MAP

Bicycle Transportation Plan Map adopted by City Council on July 24, 2023  
as part of the Parks, Recreation, and Open Space Master Plan and the Comprehensive Plan 2021



## LEGEND

- On-Street Bike Routes
- Cycle Tracks
- Bike Lanes
- Future Bikeway Accommodation Study Area
- Shared Use Paths
- Proposed Shared Use Path - Study Area
- Proposed Regional Bicycle Network\*
- County Line
- Rail Roads
- Existing Parks
- Schools
- DART
- Libraries
- Recreation Facilities
- Trail Connection
- Plano City Limit

All On-Street Bike Routes and Shared Use Paths are shown in approximate locations.  
Note: When multiple lines appear side by side, it denotes multiple uses served by the same facility.  
\*North Central Texas Council of Governments Regional Veloweb.

The locations of proposed sites, trails and facilities are subject to change.